

# Clear Systems Limited

181 Cubbington Road, Leamington Spa, CV32 7AU, UK.

Tel: 0845 643 2440 Fax: 0871 288 4320.

support@clearsystems.co.uk

## Technical Bulletin.

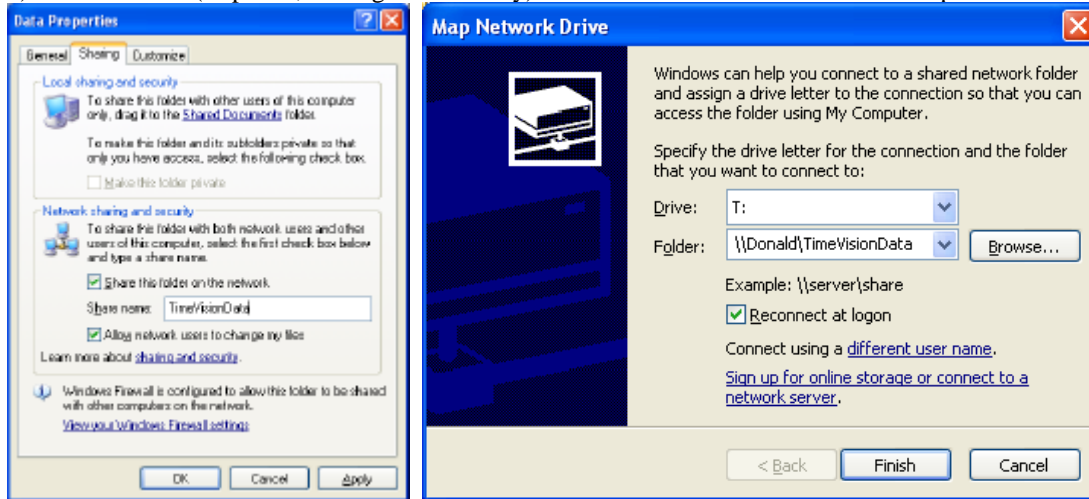
### TimeVision Plus – Networked Data and Users

Revision	Date	Who	Reason
1.0	25Nov08	NickR	Initial release
1.1	18Aug11	NickR	Updated for TimeVision Plus

The Network use of TimeVision Plus is controlled by authorising the serial number and the network security of the Paradox database engine.

To Install TimeVision Plus for Networked Use it is best to have the database located in a common Network Drive. To authorise TimeVision Plus you will need the serial number and access to the internet on the installation PCs and either do the auto-authorise or contact Computime UK on 0113 230 2002, fax: 0113 220 0330 or techsupp@computimeuk.com.

1) Create a share (Explorer,Sharing and Security) for the database location and then map a Network Drive (Explorer,Tools):

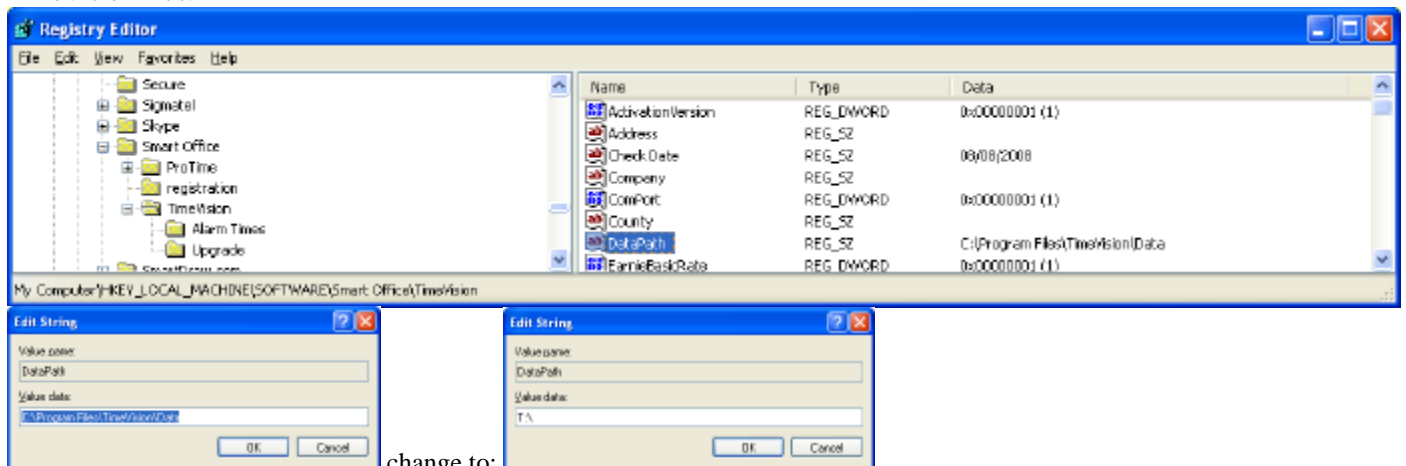


2) Install TimeVision Plus on the main PC and do the product registration, you will need to enter the Serial Number and have internet access to authorise it.

Then if prompted specify the Network Drive (T: in this example).

If not then Close all instances of TimeVision Plus and make the following registry change to

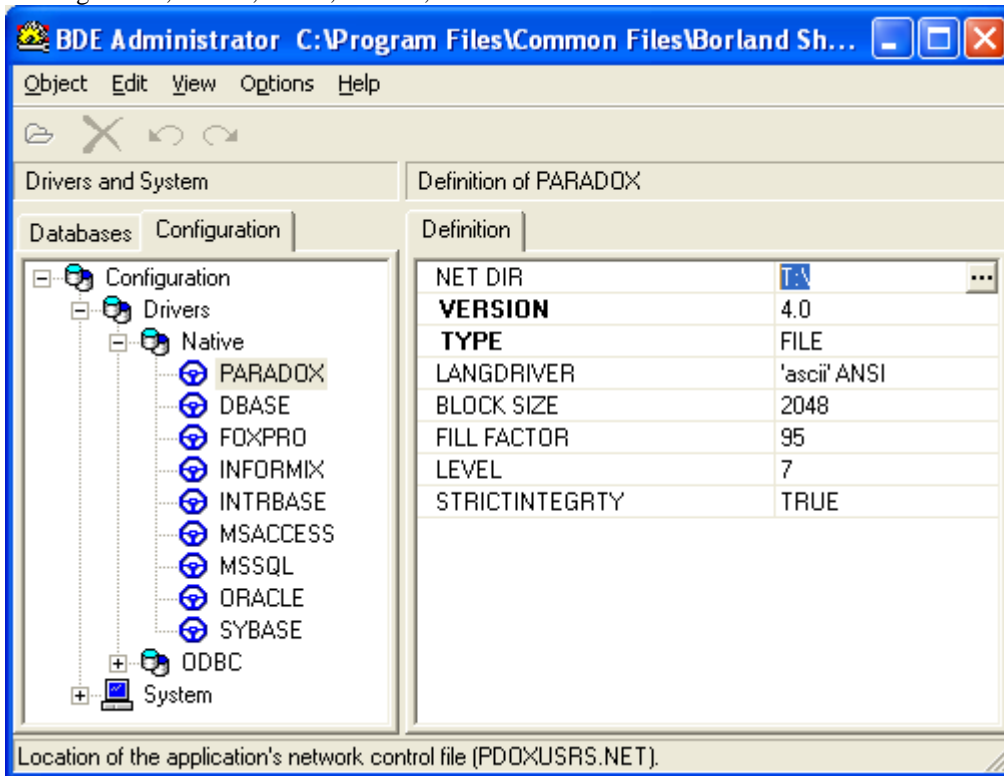
“HKEY\_LOCAL\_MACHINE\SOFTWARE\Smart Office\TimeVision Plus:DataPath” = “T:\” on **all** Network PCs to use TimeVision Plus:



The information contained in this document is correct to the best of our knowledge. However, where third-party products are involved we cannot be held responsible for errors and omissions – please check with the manufacturer for up to date information.

E. & O.E.

3) Check the BDE Administrator setting on **all** Network PCs to use TimeVision Plus:  
 "Configuration,Drivers,Native,Paradox, NET DIR" is set to the Network Drive from the Control Panel:



4) Now restart TimeVision Plus and continue with the installation and set-up.